

**Welcome to Stamp News Online's
"WORLD OF TOPICALS"
sponsored in part by
**STAMP SMITH
TOPICAL STAMPS & COVERS****



**We have an extensive stock
of Topical stamps & covers**

Send us your want list.

We respond to all requests!



Thedale.smith48@gmail.com

Phone: 816-734-4536

1212 NE 96th Terrace

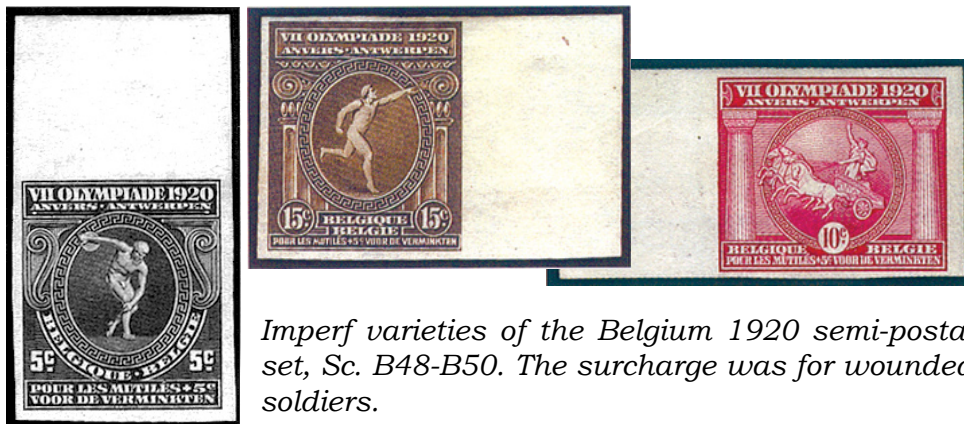
Kansas City, MO 64155

World of Topicals: The Olympics, Part 3

(As explained in Part 1, this comprehensive study is a compilation of material from various articles that have appeared in Mekeel's & STAMPS over the years. Unless color is essential to the point being made, some images in the early articles have been incorporated here in black and white, as originally published. JFD.)

1920, Antwerp

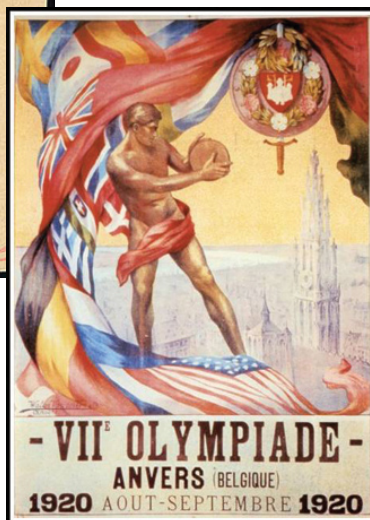
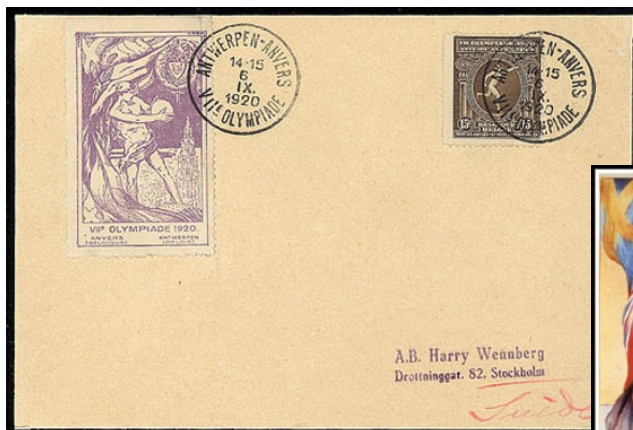
After the 1916 Games scheduled for Berlin were cancelled due to World War I, the Olympics resumed in 1920 with the VII Olympiade, in Antwerp, Belgium—without Germany and its WW I allies: Austria, Bulgaria, Hungary and Turkey, who were banned from the Games.



Imperf varieties of the Belgium 1920 semi-postal set, Sc. B48-B50. The surcharge was for wounded soldiers.

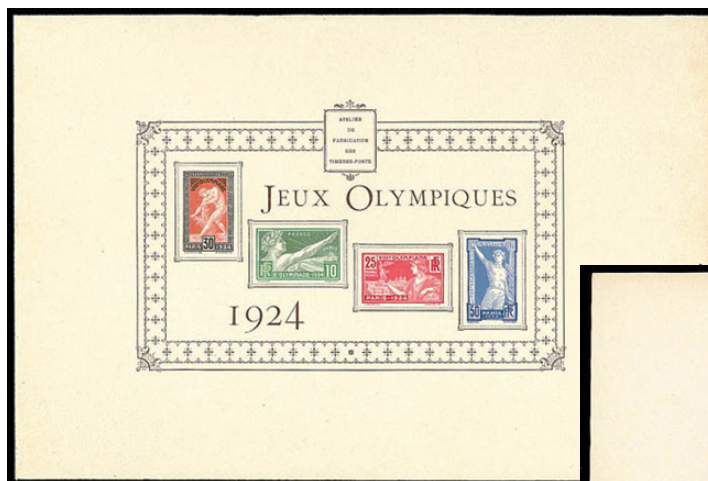
The Belgium 1920 semi-postal Olympic set, Sc. B48-B50, tied by an Olympic postmark, “Antwerp/16.8.1920/VII Olympiade” (third day of the Games) on an official Belgian Olympic Committee cover to stamp publication “L’Echo de la Timbrologie” in France.





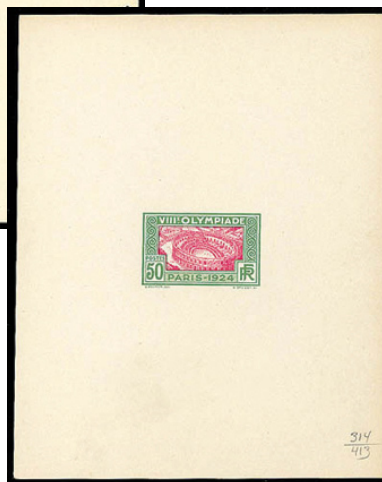
1920 15¢ Runner stamp, Sc. B50 tied by “Antwerpen/6.IX.1920/VIIe Olympiade” postmark on cover to Sweden with violet Olympic label of Games (from a set of five, same design, in different colors), also tied to cover; right, the official poster on which the label was based.

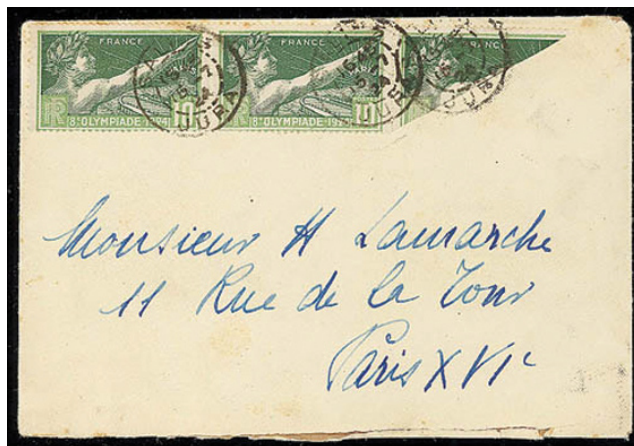
1924, Paris



Above, France 1924 10c-50c Olympic Deluxe Collective Proof, of only 135 examples that were issued for distribution to IOC members and a few officials.

Right, France 1924 50c Nimes Arena unissued Olympic Essay.





France 1924 10c Olympic stamp, Sc. 198, in a strip of three with right stamp diagonally bisected, paying the correct 25c rate to Paris, stamps tied by 1924 Salins postmarks, Very Fine and unusual.



Lebanon 1924 Olympic set, consisting of the France Olympic set with "Grand Liban" Lebanon overprint, Sc. 18-21, on cover tied by bilingual Beyrouth/31 May 1924 postmark.

1928, Amsterdam



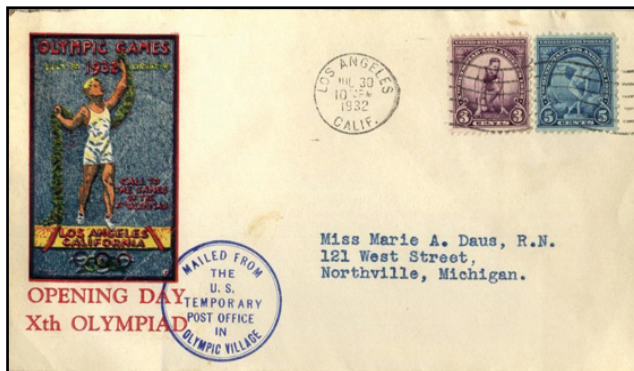
Netherlands, 1928, 1-1/2c-30c Olympics set, Sc. B25-B32, tied by Olympic Stadion cancels on Official Netherlands Olympic Committee envelope to Germany. At bottom center is the official IXe Olympiade label.



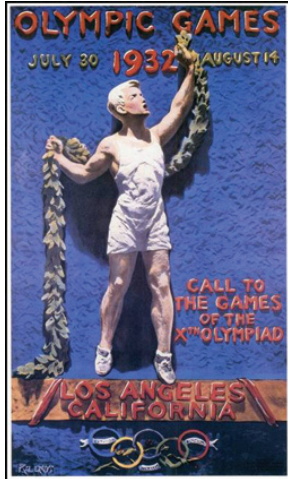
Portugal 1928 15c Olympic Postal Tax stamp, Sc. RA14, (top center on the cover), tied by “Ambulancias/Avenica - Gare/24 Mai '28” double circle postmark on cover to Porto. The use of this stamp was valid for only three days (May 22-24, 1928) and, in addition to regular postage, was obligatory. Of the proceeds, 10% was retained by the Post Office and 90% went to the Portuguese Olympic Committee in support of Portuguese athletes at the Amsterdam Games.

1932, Los Angeles

1932 2¢ Olympic Hurdler photo essay printed on card (43 x 50mm). Rejected design shows hurdler. The U.S. Summer Olympics set was issued in 3¢ & 5¢ values, for the new 3¢ domestic rate & the 5¢ international rate.



U.S. 1932 Summer Olympics stamps, mailed from the Olympic Village Post Office on the July 30, 1932 Opening Day of the Olympics. The stamps were issued June 15, 1932.



The cover on page 23 uses as the cachet the design of this official poster of the Los Angeles Olympic Games.

1936, Berlin

After the 1916 Berlin Games were cancelled due to World War I, 1936 was Germany's chance to use the Olympics as another propaganda opportunity.



Germany 1936 Summer Olympics complete set, Sc. B82-B89, tied by "Berlin Olympia - Stadion/1.8.36" (Opening Day of the Games) on registered Official Cover of the German Olympic Organizing Committee with scarce "Berlin Olympia - Stadion" registry label. Germany issued these eight stamps as well as the two souvenir sheets below (Sc. B91-B92).

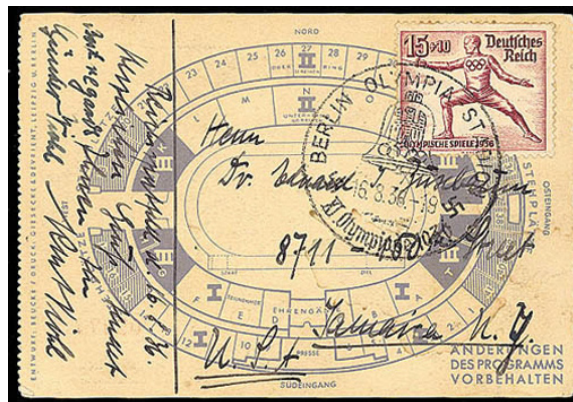


Hitler's plan to use the Berlin Games to demonstrate the superiority of the Aryan "master race" were spoiled by U.S. African-American Olympic stars, led by Jesse Owens.

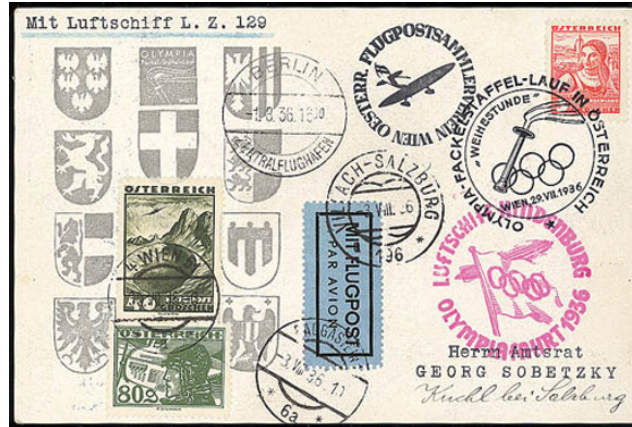


This cover to the U.S. bears the Germany 1936 12pf + 6pf Runner semi-postal in a margin block of four, along with a U.S. 3¢ Washington, all tied by "U.S.-Ger. Sea Post/S.S. Washington/Aug. 12, 1936" duplex cancels.

The Runner stamps are autographed by none other than Jesse Owens and Frank Wyckoff two members of the Gold Medal winning 4x100 meter relay. The reverse is signed by the other two, Ralph Metcalfe and Archie Williams. Owens also took Gold in the 100 meter, 200 meters and the long jump, while Williams won the 400 meter run.



Germany 1936 15pf Olympic Fencer, Sc. B87, tied by "Berlin Olympic Stadion/16.8.36" circular date stamp (the day of the Closing Ceremonies) on a ticket to the Opening Day Ceremonies and used as a postcard to the United States.



This also was the era of the Zeppelin. Seen here is a commemorative card for the Olympic Torch Run originating from Austria franked with an Austria 3pf tied by “Wien/29.VII.1936” Olympic Torch Run postmark. In addition it is franked with two other Austrian adhesives for transmission on the Olympic Zeppelin flight, tied by “Wien/30.VI.36” c.d.s. the card also with the magenta Zeppelin Olympic flight cachet and “Berlin-Zentralflughafen/1.8.36” c.d.s.

1940, Tokyo / Helsinki

Once again the symbol of peaceful competition, the Olympic Games, had to be cancelled due to the realities of war, in this case World War II. Originally scheduled for Tokyo, due to Japanese aggression in Asia they were designated for Helsinki in 1938, only to be cancelled in 1939 as World War II broke out in Europe.



Finland produced seven essays, seen here in a composite sheetlet, but they were never issued.

1944, London

The 1944 London Games also were cancelled, but Polish Prisoners of War were granted permission by the Nazis to hold an unofficial POW Olympics in 1944. This is one of the stamps issued by the Polish officers for the event.



1948, London



Great Britain 1948 Olympics set, Sc. 271-274 on a cover cancelled on the First Day of issue of the stamps and the Opening Day of the 1948 Olympic Games.

With the 1948 Games, we conclude our review of the Modern Olympic Games. Should you want to continue on the subject, there are literally thousands of stamps that have been issued since then.

Many of these images are from The Manikian Olympic Games Collection section of the Schuyler Rumsey 2011 WESTPEX auction, accessible at <http://www.rumseyauctions.com/auctions/sale/44>

An extensive study of Olympics Posters and Poster Stamps can be seen at <http://www.alphabetilately.org/Oly/1920.html>

If you enjoyed this article, and are not already a subscriber, for \$12 a year you can enjoy 60+ pages a month. To subscribe, email subs@stampnewsnow.com

The Modern Olympics

This article was brought to you in part by the leading society for Topical Stamp Collectors. To join or learn more about the ATA, please go to

www.americantopicalassn.org

or email: americantopical@msn.com



ATA

MAKING STAMP COLLECTING FUN

AMERICAN TOPICAL ASSOCIATION

TOPICAL STAMP COLLECTING
SINCE 1949 AND
BOLDLY TO THE FUTURE

MEMBERSHIP OFFERS YOU:

- *Topical Time*: all-color 96-page journal. Bi-monthly electronic & print editions.
- Connection with ~2800 members, including ~500 international members. Find others who share your passion.
- Items at nominal cost to enrich your collecting:
 - ~1100 Checklists.
 - Handbooks, DVDs, Membership Directory.
 - Searchable digital archive of all 382 issues of *Topical Time*.
- Two free handbooks when you join the ATA!
Details on website.



www.americantopicalassn.org
PO Box 8 • CARTERVILLE, IL 62918-0008 • USA
618.985.5100 • americantopical@msn.com

